

How to install the windows version of RothC

Written by Kevin Coleman (03/06/2016)

These installation instructions will tell you how to download, install and test that the model has been installed correctly.

Please email Kevin Coleman (kevin.coleman@rothamsted.ac.uk) if you have any questions or comments.

Download:

Download the model from: <http://www.rothamsted.ac.uk/sustainable-soils-and-grassland-systems/rothamsted-carbon-model-rothc>

After submitting your details, download 'windows version (version 2.1)'



ATTACHMENT	SIZE
DOS Version	160.02 KB
Windows version (version 1.1)	2.04 MB
Windows version (version 2.0)	2.05 MB
Windows version (version 2.1) Download this version	2.05 MB

Figure 1.

Once downloaded save the zip file to a temporary folder for example D:\RothC_tmp

Install:

Note: you may need admin rights to install the software, please contact your IT / computing department.

Double click **setup.exe**, click **yes** when asked "Do you want to allow the following program from an unknown publisher to make changes to this computer?"

Now click **ok**

Note; Due to the changes in the security of Windows 7 and later, it is necessary to change the directory/folder the software is installed to.

Click **Change directory** (Fig. 2), and select a location to install the model to for example **D:\RothC**, if the destination directory does not exist, click **yes** to create the directory.

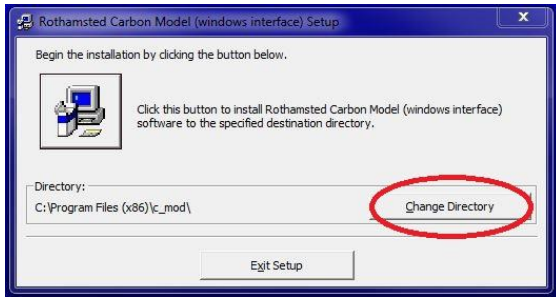


Figure 2.

Click the **button** (Fig. 3) that says “Click this button to install Rothamsted Carbon Model ... “



Figure 3.

Click **continue**

Click **yes** (Fig. 4), if asked “a file being copied is not newer than the file currently on your system. It is recommended that you keep your existing file”.



Figure 4

Once the model has installed click **OK** (Fig5.)

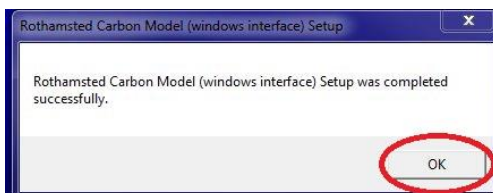


Figure 5

Testing the model:

To check that the model has installed correctly and has been installed to a folder with write access, run the scenario **hf01.set** which is included when the model is installed.

To run the scenario select **run models** → **Carbon model (RothC_26.3)** (Fig. 6)

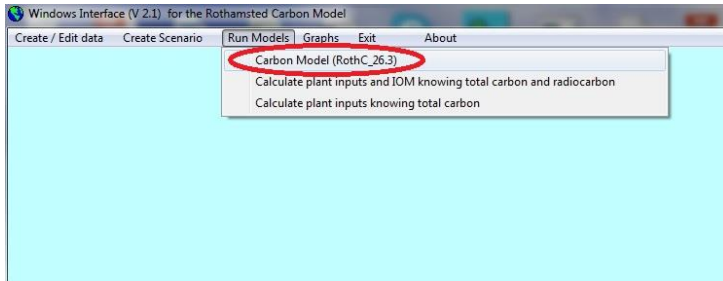


Figure 6.

Next select **hf01.set**, and click **OK** (Fig.7)

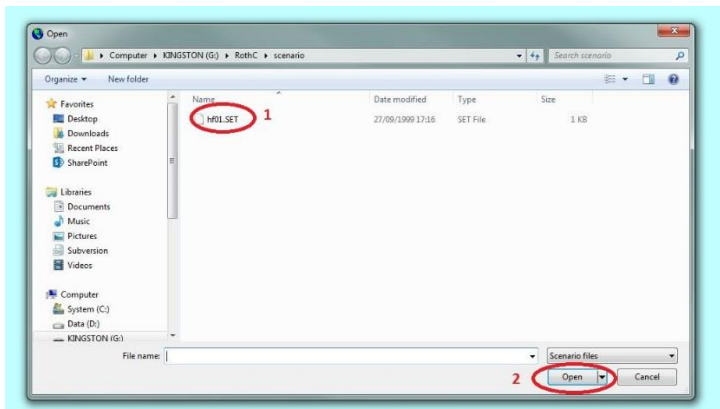


Figure 7.

Once the model has finished, check the date and time the following two files were created.

D:\RothC\graph\hf01.263

D:\RothC\output\hf01.263

Both these file are text files and can be edited in any text package, (such as TextPad, or WordPad).

If the date and time the files were created show they have just been created, the model has installed correctly.